



DATASHEET

HYDRAMITE JACKS

6.5 - 15 Tonne



Small but mighty. The Tangye Hydramite offers powerful lifting in a complete package.

The Tangye Hydramite range of jacks are rugged performers with exceptional features that make them lightweight, extremely portable and strong.

Simple to deploy and operate, the Hydramite offers outstanding performance in a small footprint.

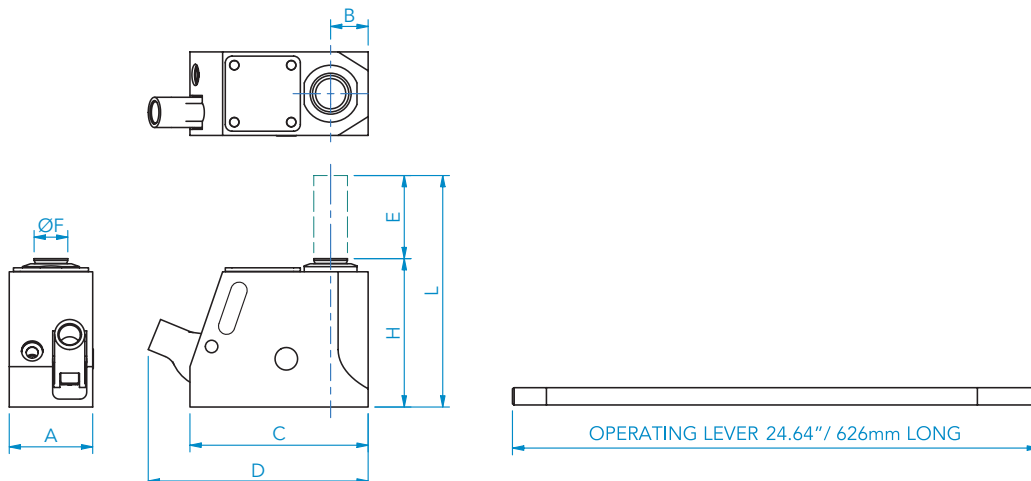
Designed for industry - The Hydramite features a one piece body machined from high strength aluminum billet and a ram made from alloy steel, along with wear strips behind the ram seal to ensure long cylinder life. The oil system is completely sealed, ensuring that all moving parts are lubricated at all times. This extends life, reduces maintenance and allows the jack to be used in any orientation.

Available in 3 sizes ranging from 6.5 tonne to 15 tonne lift capacity, the Hydramite is designed to give many years of reliable lifting.

Features and Benefits:

- **Powerful** - 6.5 tonne, 10 tonne and 15 tonne lift capacity available as standard.
- **Proven** - Thousands in use around the world.
- **Reliable** - Servicing and maintenance kept to a minimum.
- **Well Engineered** - Servicing can be carried out with standard hand tools.
- **Safe** - Relief valve prevents overloading.
- **Compact & Lightweight** - Easy to move, deploy and store.
- **Versatile** - Operates in any orientation, totally enclosed and suitable for use in dusty conditions.
- **Simple** - Smooth and controlled lifting and lowering via the operating lever.

Specifications & Dimensions:



Model	8104H		1105002		1105003	
Capacity	6.5 Tonne		10 Tonne		15 Tonne	
Oil Capacity	0.17 Pints	0.10 Litres	0.23 Pints	0.13 Litres	0.48 Pints	0.27 Litres
Jack Weight	8.6 lbs	3.9 kg	13.9 lbs	6.3 kg	22 lbs	10.0 kg
Operating Lever	2.87 Lbs				1.3 Kg	
Dimensions	ins	mm	ins	mm	ins	mm
A - Width	2.99	76	2.99	76	3.62	92
B - Centre Ram to Base	1.31	33.3	1.57	40	1.89	48
C - Base Length	6.22	158	6.73	171	7.76	197
D - Overall Depth	7.48	190	8.15	207	9.29	236
E - Stroke	2.95	75	4.50	115	6.00	152
F - Ram Diameter	1.18	30	1.50	38	1.87	47.5
H - Closed Height	5.51	140	7.17	182	9.06	230
L - Extended Height	8.46	215	11.69	297	15.06	382
Service Kit Number	995052		995053		995054	
Operating Lever			993001			